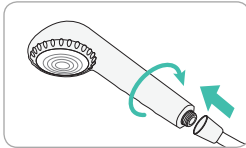


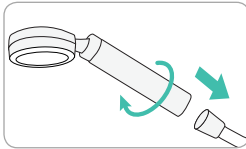
How to Install



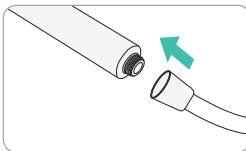
Replacing a handheld shower head



1. Separate the old handheld shower head from the hose by turning it counterclockwise.

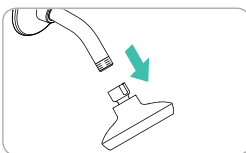


2. Connect the new handheld shower head on the hose by turning it clockwise and fastening until tight.

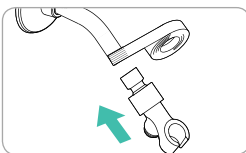


3. If a water leak is found between the shower head handle and the hose, ensure the rubber gasket is firmly in place in the hose connector.

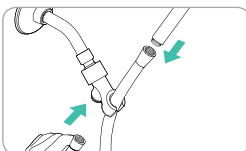
Replacing a fixed shower head



1. Separate the old shower head from the pipe by turning it counterclockwise and remove any residual sealant.



2. Reapply the new sealant to the pipe and connect the new shower head holder (not included) to the exposed shower pipe.



3. Connect the nut of the hose to the shower holder and the cone nut to the shower head handle.