

SAFETY INSTRUCTIONS

Please read all instructions thoroughly before using this product.
Barumi is not responsible for damages caused by natural disasters (earthquakes, lightning, fires, etc.) or users' negligence (improper installation or use of this product).

DANGER

Any negligence, improper use or improper installation of this product may result in serious injury, death and/or property damage.

- If the product is used by children, the elderly, users with sensitive or weak skin, or someone who has difficulty with controlling the temperature, set the water and seat temperature to "Low". Otherwise, there is a risk of low-temperature burns. Les enfants, les personnes âgées, ceux qui ne peuvent pas contrôler la température eux même et ceux qui ont la peau sensible doivent régler la "basse" température de l'eau chaude et du siège des toilettes. Il peut y avoir un risque de brûlures à basse température. "Low-temperature burn" refers to burns caused by exposure to a temperature of 104°F for a long time. La "brûlure à basse température" désigne les brûlures causées par un contact de longue durée à 104°F.
- Do not place or store the product where it can fall or be pulled into the tub or sink. Ne placez pas et ne stockez pas le produit dans un endroit où il pourrait tomber ou entrer dans la baignoire.
- If the product becomes submerged, unplug it immediately and do not reach into the water. Si le produit est tombé dans l'eau, débranchez-le immédiatement et ne touchez pas l'eau.
- Keep the power cord away from heated surfaces or hot objects. Si le produit est tombé dans l'eau, débranchez-le immédiatement et ne touchez pas l'eau.
- Remove dust and water from the power plug, and plug it firmly into the outlet. Enlevez la poussière et l'eau de la prise d'alimentation et insérez-la fermement jusqu'à la prise femelle.
- If the product is malfunctioning, unplug the power cord immediately and call Barumi. En cas de dysfonctionnement du produit, ne l'utilisez pas. Débranchez la prise d'alimentation et contactez Barumithe.
- Do not pull the power cord or touch the power plug with wet hands. Ne tirez pas le cordon d'alimentation et ne touchez pas la prise d'alimentation avec les mains mouillées.

1

- Do not use gray water or industrial water as the water supply. Ne pas utiliser d'eau usée ou industrielle.
- Self-disassembly, repair or modification of the product is strictly prohibited. Ne jamais démonter, réparer ou modifier.
- Keep combustibles, such as cigarettes, away from the product. Tenez à l'écart des produits inflammables tels que les cigarettes.
- Do not bend or crush the hose. It may cause water leakage. Ne pliez pas et n'écrasez pas le tuyau de raccordement. Cela peut provoquer des fuites d'eau.
- When cleaning the product, remove the power plug. Spraying a chemical solution directly on the product or using a rough cloth may damage the product. Lors du nettoyage du produit, débranchez la prise d'alimentation. La pulvérisation de solutions chimiques directement sur le produit ou l'utilisation d'un chiffon rugueux peut endommager le produit.
- Do not insert sharp objects in gaps or hot air outlets or block them with your hands. N'insérez pas d'objet pointu et n'obstruez pas la fente du produit ou la sortie d'air chaud avec votre main.
- After installation, make sure that there is no leakage at the water supply connection. Après l'installation, assurez-vous de vérifier que la partie du raccordement de l'alimentation en eau ne fuit pas.
- If the product has not been used for a long period of time, disconnect the power cord and drain the water tank. Old tank water can cause skin irritation. Lorsqu'il n'est pas utilisé pendant une longue durée, vidangez l'eau et débranchez la prise d'alimentation. L'eau se détériore et cela provoque une irritation de la peau.
- When lightning strikes, unplug the power cord. Débranchez la prise d'alimentation pendant les orages.
- Make sure the temperature in the bathroom does not drop below 0°F due to a risk of freezing. Use a heater to warm the bathroom. Assurez-vous que la température dans la salle de bain ne descende pas en dessous de zéro. Il y a un risque de congélation. Pour garder la salle de bain au chaud, utilisez un radiateur.
- Connect the product to a properly grounded, 120V power outlet. If you are unsure with grounding condition or do not have a GFCI outlet, contact a qualified electrician to have one installed. Ce produit doit être connecté à une prise d'alimentation 120V correctement mise à la terre. En cas de doute ou si vous n'avez pas de prise mise à la terre ou GFCI, consultez un électricien qualifié pour l'installer.
- Do not use a power supply or wiring equipment that exceeds the specified rating. N'utilisez pas d'alimentation électrique ou d'équipement de câblage dont la valeur nominale est supérieure à celle spécifiée.

2

- If the power cord is damaged, call Barumi for a replacement. Si le cordon d'alimentation est endommagé, contactez Barumi pour le remplacement.
- Do not let children play on or around the bidet. Ne laissez pas les enfants jouer sur ou autour du bidet.
- Do not sleep while sitting on this product. Do not use the product if you are drowsy or have taken any medication that accompanies drowsiness. Ne dormez pas en étant assis sur ce produit. N'utilisez pas le produit si vous avez sommeil ou si vous prenez des médicaments qui peuvent vous rendre le sommeil.
- This product is not intended for outdoor use. It is for indoor use only. Ce produit n'est pas destiné à une utilisation extérieure. C'est pour une utilisation intérieure uniquement.
- Do not pour a large amount of water on this product. Ne versez pas de grandes quantités d'eau sur ce produit.
- Do not use a steam cleaner on this product. N'utilisez pas de nettoyeur à vapeur sur ce produit.
- Do not lean on the lid as it may damage the product. Ne vous appuyez pas sur le couvercle car cela pourrait endommager le produit.
- The product is not intended for use by people who lack physical, sensory or mental ability or for users such as children who are not capable of safely using the product without close supervision or instruction. Cet appareil n'est pas destiné à être utilisé par des personnes (y compris des enfants) qui manquent de capacités physiques, sensorielles ou mentales, ou qui n'ont pas l'expérience et les connaissances nécessaires pour utiliser l'appareil en toute sécurité sans supervision ou direction.
- Do not plug this product along with multiple electrical appliances to power strip at the same time. Ne branchez pas plusieurs appareils électriques dans une prise femelle en même temps.
- Do not install the product in a humid place. N'installez pas cet appareil dans un endroit humide.
- Do not place heavy objects or step on the product. Ne montez pas sur l'appareil et ne placez pas d'objets lourds dessus.
- Do not expose the product to direct sunlight. Évitez la lumière directe du soleil.
- Unplug the power cord before removing the product from the toilet. Débranchez le cordon d'alimentation avant de retirer le produit de la cuvette des toilettes.
- Do not use a power supply or wiring equipment that exceeds the specified rating. N'utilisez pas d'alimentation électrique ou d'équipement de câblage dont la valeur nominale est supérieure à celle spécifiée.

3

BEFORE YOU BEGIN

WHAT TO EXPECT DURING INSTALLATION THE 3 MAIN STEPS.

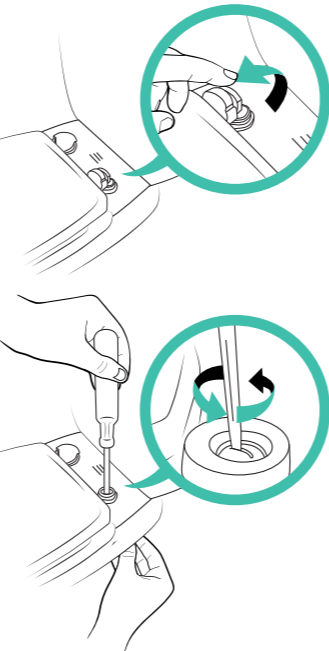
STEP 1 PREPARE!

REMOVE THE CURRENT TOILET SEAT
Find the bolt caps at the back of the seat and open them if they're closed.

Next, firmly grip the nut that is fastened to the end of the bolt and begin turning the bolt counterclockwise to unfasten the seat. In some cases, if the nut has wings, you can turn the nut while holding down the bolt. Depending on your toilet seat, you may need to use a phillips screwdriver and a wrench.

CHECK FOR MISSING PARTS

To ensure your installation is worry-free, please make sure you have all the necessary parts from the factory by referencing the parts list. Set each part aside so you can easily access them during installation.



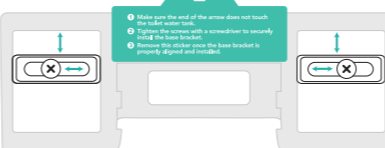
4

STEP 2 INSTALL!

THE BASE BRACKET MUST BE INSTALLED PROPERLY

Before installing the bidet seat, it is imperative the base bracket is installed first AND properly. If this bracket is not positioned and installed properly, your bidet seat will not be aligned with your toilet.

POSITIONING THE BASE BRACKET



PLEASE NOTE: Please make sure each screw is spaced inside the frame identically to each other. After installation is complete, you can remove the sticker.

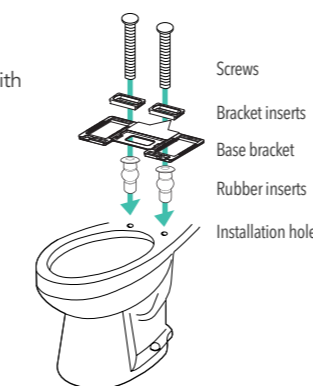
STEP 3 CONNECT!

CONNECT TO YOUR BATHROOM OUTLET (BEST OPTION)

If your bathroom is equipped with a grounded electrical outlet (GFCI), plug your power cord into it to turn the bidet on.

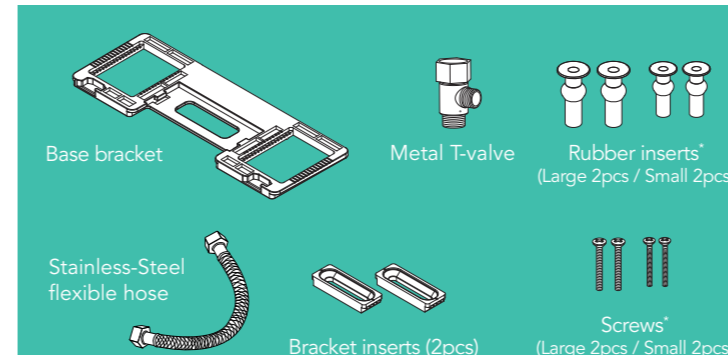
IF OUTLET NOT AVAILABLE

If your bathroom is not equipped with a grounded electrical outlet, an extension cord may be used to connect the power cord to a GFCI outlet. Please use a grounded extension cord.



5

INSTALLATION PROCEDURE



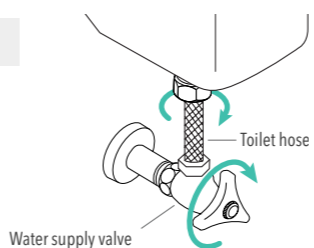
*Please use the size (large or small) that best fits your application.

BEFORE INSTALLATION

For optimal performance, please install the product after reading the installation manual thoroughly.
Plug in the water supply only after installation is complete.

01 Separate water supply hose

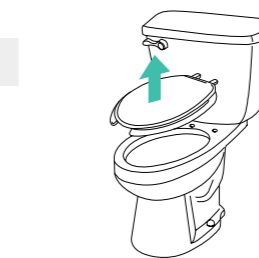
- 1 Shut off the water valve.
- 2 Drain the toilet tank.
- 3 Disconnect the hose.



6

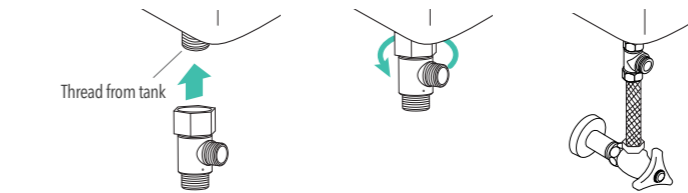
02 Remove the existing toilet seat

Unfasten the nut and remove the toilet seat.



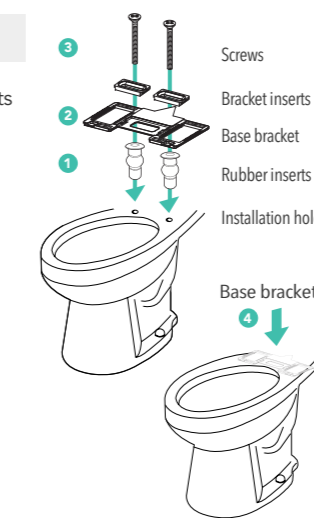
03 Install the T-valve

Install the T-valve as shown.



04 Install the base bracket

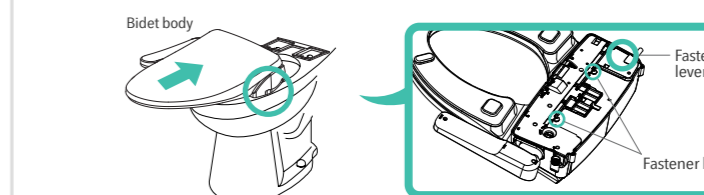
- 1 Firmly push the rubber inserts into the toilet seat holes.
- 2 Align the base bracket with the toilet seat holes.
- 3 Install the following parts to the base bracket, in this order—bracket inserts then screws.
- 4 Tighten the screws with a screwdriver after making sure the base bracket is properly aligned.



7

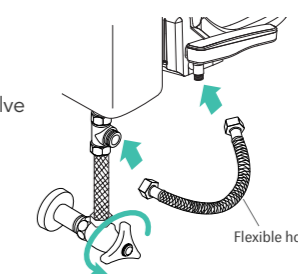
05 Insert bidet body

Insert the main bidet body into the groove on the installed base bracket until the fastening hooks "click".
To remove the bidet body from the base bracket, simply pull the lever to unhook the fasteners and pull the bidet body off.



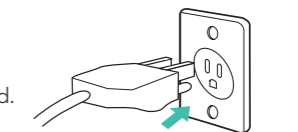
06 Connect the flexible hose

Connect the flexible hose to the T-valve and the main body.
Turn the water supply valve counterclockwise to allow water flow.



07 Connect the power cord

Plug the power cord into a grounded electrical outlet. If there is no outlet, use a grounded extension power cord.

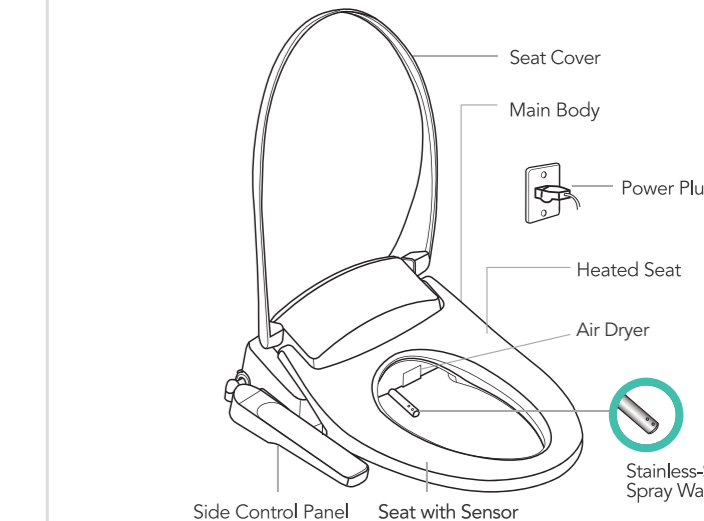


OPERATION CHECK

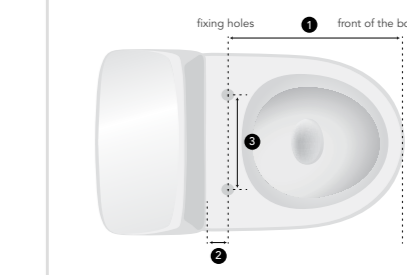
1. Turn the water supply valve counterclockwise to check for water leakage.
2. Check the operation of each function.

8

PARTS NAMES



COMPATIBILITY GUIDE



- 1 The distance from the center of the fixing hole to the front of the toilet bowl must be at least 18.5"
- 2 The distance from the toilet tank to the center of the fixing hole must be at least 1.8" (recommended distance is 2.4")
- 3 The distance between the center of both fixing holes must be within the range of 5.5" - 7.8"

9

OPERATION GUIDE

STOP

- Press once to stop the operation.
- Press twice to operate automatic nozzle cleaning function.

REAR

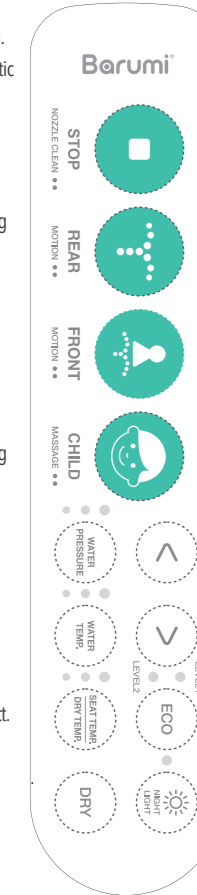
- Press once for rear cleaning.
 - Press twice for nozzle oscillating movement for massaging effect.
- Press again to stop cleaning function.

FRONT

- Press once for front cleaning for ladies.
 - Press twice for nozzle oscillating movement for massaging effect.
- Press again to stop cleaning function.

CHILD/MESSAGE

- Press once for child mode. Child mode provides 30 seconds of wash and 1 minute of dry.
- Press twice for massaging effect. Massaging with water helps you with bowel movements.



ECO

Minimizes power use by adjusting water temp., seat temp. and dry air temp.

- Press once for LEVEL 1: When the product is not in use, water temp. and seat temp. remain in standard economy mode.

- Press twice for LEVEL 2: When the product is not in use, water temp. and seat temp. remain in economy plus mode.

WATER PRESSURE

3 levels of water pressure

WATER TEMPERATURE

3 levels of water temp. Press 4th time to turn off.

SEAT TEMP. / DRY TEMP.

3 levels of seat and air dry temp. Press 4th time to turn off.

NIGHT LIGHT

Press the button to light up the bidet seat at night.

DRY

Press to activate air dryer.

- Press once
- Press twice

10

MAINTENANCE

HOW TO CLEAN THE PRODUCT

1. Cleaning the exterior part of the bidet toilet seat

Wipe the exterior part of the bidet with a soft sponge or cloth soaked with neutral detergent. Do not use hydrochloric detergent, thinner, benzene, lubricant, sandpaper, or insecticide, etc. as it may cause damage to your bidet.

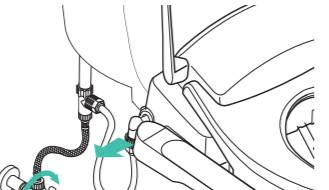
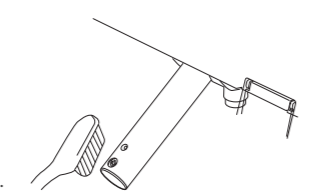
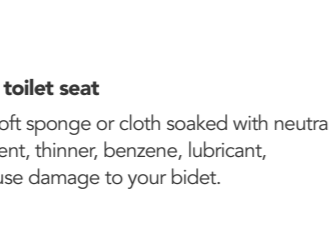
2. Spray wand cleaning (manual)

When the user is not seated, press the REAR button to eject the spray wand. Lightly wipe the spray wand with a soft sponge or a toothbrush soaked with dish soap. After cleaning, press the REAR button again or press the STOP button to restore the spray wand to its initial position.

- * Do not bend or pull the spray wand with excessive force, as this may cause damage.

3. Filter mesh cleaning (water supply must be shut off)

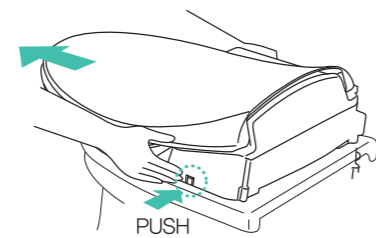
- Close the water supply valve and disconnect the flexible hose.
- Clean the filter mesh at both sides of the hose with a brush.
- Reconnect the flexible hose.



11

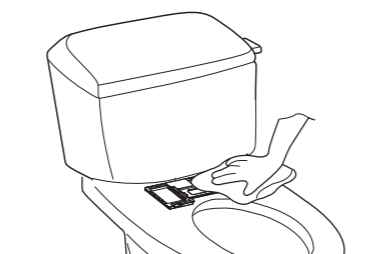
4. Detaching the bidet toilet seat

To detach the bidet toilet seat, hold both sides and pull it forward while pressing the release button located on the right side of the unit.



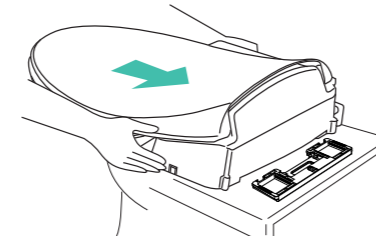
5. Clean thoroughly

Remove the bidet toilet seat and clean thoroughly.



6. Reattaching the bidet toilet seat

To reattach the bidet toilet seat, align the center of the unit with the center of the base bracket and slide the body backwards until you hear a "click" sound.



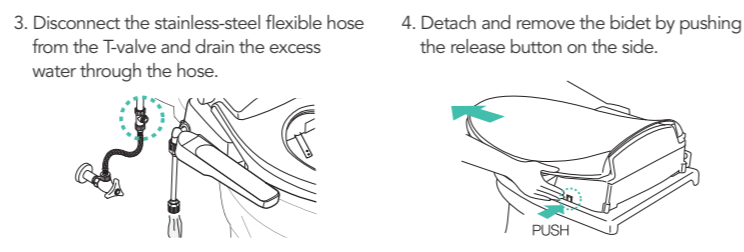
12

CARING FOR YOUR BIDET IF YOU WON'T USE IT FOR A LONG TIME.

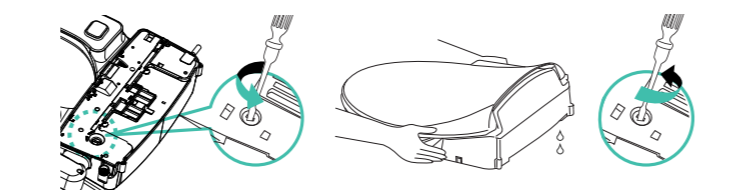
Please take these necessary steps to preserve your bidet during non-use.

Drain the tank water and cut off the power

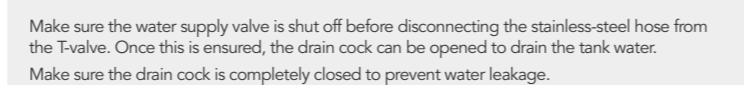
1. Unplug the power cord from the outlet.
2. Close the water supply valve to stop the water flowing into the tank.



3. Disconnect the stainless-steel flexible hose from the T-valve and drain the excess water through the hose.
4. Detach and remove the bidet by pushing the release button on the side.



5. Open the drain cock at the bottom of the bidet, flip over, drain completely, and close the drain cock.



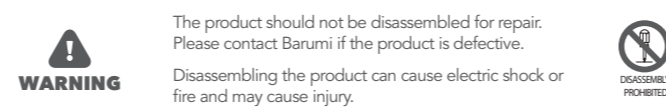
6. When you're ready to use your bidet again, make sure it's working properly by testing all the functions.

- Winter Care (for cold climates)**
- Your bidet should be connected to power even if you temporarily stop using the product.
 - Set the hot water temperature on the control panel to at least "Low".
 - This can help prevent the tank water from freezing.

13

TROUBLESHOOTING

If the product is not operating properly, please refer to the following possible solutions.



Power supply

Problem	Possible Cause(s)	Solution
The unit is not working	Is the power turned off? Or is the circuit breaker turned off?	Wait until the power is restored, or turn on the circuit breaker
	Is the operation lamp on the lateral control panel turned off?	Plug the power cord into the electrical outlet

REAR / FRONT wash functions

Problem	Possible Cause(s)	Solution
Water pressure is weak	Is the water pressure too low? Is the strainer clogged?	Increase the water pressure Clean the strainer
Water is cold	Is the temperature set too low or is the unit turned off? Is it in Power-Save mode?	Adjust the water temperature on the control panel Press the ECO button
Water spray stops during use	Cleaning stops 90 seconds after pressing REAR/FRONT buttons The seat sensor isn't detecting human contact	Press REAR/FRONT again Check the position of the seat sensor (refer to P9)

14

Heated seat

Problem	Possible Cause(s)	Solution
The seat does not warm up	Is the seat temperature set too low or is it turned off? Is the product in Power-Save mode?	Adjust the seat temperature on the control panel Press the ECO button

Seat sensor

Problem	Possible Cause(s)	Solution
The REAR function operates without user detection on the seat	Is there water residue or a wet towel on the seat?	Wipe off the water residue or remove the wet towel

Power save

Problem	Possible Cause(s)	Solution
The Power-Save function is not working	Is the product unplugged? Or is the power turned off?	Reset the Power-Save mode by pushing the ECO button on the control panel

Self diagnosis

Condition Displayed	Cause	Solution
All 3 WATER PRESSURE lights blink simultaneously	There is no water inside the water tank	1. Press the REAR button to supply water 2. If all 3 WATER PRESSURE lights still blink 1 minute after the user presses the REAR button, it indicates that the water tank is still not filled up with water 3. If water is not supplied even when the water supply valve is opened, unplug the power cord from the socket and contact Barumi
All 3 WATER TEMP. lights blink, makes a "beeping" sound	Overheated water tank	Contact Barumi Support
1 WATER TEMP. light blinks	Malfuction of water temperature sensor	
3 SEAT LEVEL lights blink*	Overheated seat	
1 SEAT LEVEL light blinks*	Malfuction of seat temperature sensor	Contact Barumi Support
Both LEVEL1 and LEVEL2 ECO lights blink simultaneously	Malfuction of AC input power source	

* For the following cases, unplug the power cord from the socket, wait 2 minutes, and reconnect the power. If problems persist, contact Barumi.

15

FCC COMPLIANCE STATEMENT

This device complies with Part 15 of the FCC Rules. Operation is subject to the following two conditions:

- (1) This device may not cause harmful interference, and
- (2) this device must accept any interference received, including interference that may cause undesired operation.

NOTE: This equipment has been tested and found to comply with the limits for a Class B digital device, pursuant to part 15 of the FCC Rules. These limits are designed to provide reasonable protection against harmful interference in a residential installation. This equipment generates, uses and can radiate radio frequency energy and, if not installed and used in accordance with the instructions, may cause harmful interference to radio communications. However, there is no guarantee that interference will not occur in a particular installation. If this equipment does cause harmful interference to radio or television reception, which can be determined by turning the equipment off and on, the user is encouraged to try to correct the interference by one or more of the following measures:

- Reorient or relocate the receiving antenna.
- Increase the separation between the equipment and receiver.
- Connect the equipment into an outlet on a circuit different from that to which the receiver is connected.
- Consult the dealer or an experienced radio/TV technician for help

FCC Caution: Any changes or modifications not expressly approved by the party responsible for compliance could void the user's authority to operate this equipment. This transmitter must not be co-located or operating in conjunction with any other antenna or transmitter.

Industry Canada:

This device complies with Industry Canada licence exempt RSS standard(s). Operation is subject to the following two conditions:
(1) this device may not cause interference, and (2) this device must accept any interference, including interference that may cause undesired operation of the device.

Canada, avis d'Industrie Canada (IC)

Cet appareil est conforme aux normes RSS exemptes de licencié d'Industrie Canada. Son utilisation est soumise aux deux conditions.
suivantes : (1) cet appareil n'engendre pas d'interférences, et (2) cet appareil doit tolérer tout type d'interférences, notamment les interférences pouvant provoquer une utilisation non désirée de l'appareil.

16

SPECIFICATIONS

Model	EF-BM-5000 MFG Model: DB-5500	
Electrical ratings	AC 120V / 60Hz / 1260W	
Water pressure	10 - 106 psi	
Wash	REAR	Max 20.28 fl. oz/min
	FRONT	Max 18.59 fl. oz/min
	Water tank volume	6.93 fl. oz
Dry	Water temperature	Low 91.4°F, Medium 96.8°F, High 102.2°F
	Air temperature	Room temperature to 131°F
Heated seat	Heater capacity	150W
	Seat temperature	Low 91.4°F, Medium 96.8°F, High 102.2°F
Product dimensions	Safety device	Thermal fuse
	Product weight	20.6" (L) x 18.4" (W) x 7" (H)
		8.81 lbs

WARRANTY

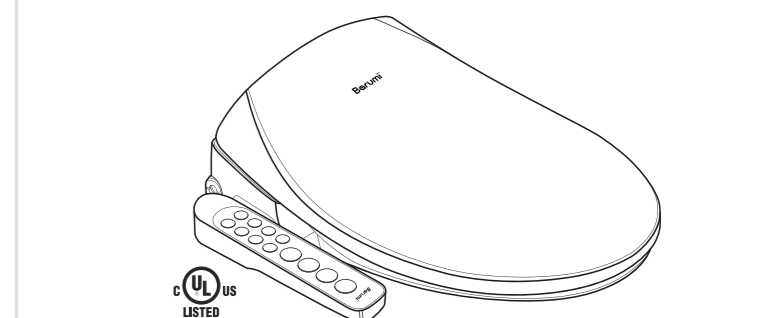
PRODUCT WARRANTY CARD

- We warrant our products to be free from manufacturing defects under normal use and service for a period of one (1) year from the date of purchase. This warranty is provided to the original purchase and cannot be transferred. If the product is used for business and/or commercial purposes, the warranty period changes to 6 months.
- If the product has a defect, please contact Barumi.

Product Name	Model Number	
Date of Purchase	Serial Number	
Name of Purchaser	Warranty Length	1 year limited warranty

Barumi 1500 N. Western Blvd. Suite 280, Denton, TX 76207 888-577-8999

17



USER MANUAL

EF-BM-5000

TABLE OF CONTENTS

Safety Instructions	1	Maintenance	11
Before You Begin	4	Troubleshooting	14
Installation Procedure	6	FCC Compliance Statement	16
Parts Names	9	Specifications	17
Compatibility Guide	9	Warranty	17
Operation Guide	10		

- This product is solely intended for households or household-like environments.
- Read all instructions and guidelines thoroughly before installation.
- User should have access to this User Manual at all times during installation and operation.
- For product improvement, designs and specifications are subject to change without prior notice.

MADE IN KOREA • Made by Dobidos • Distributed by Easyflex