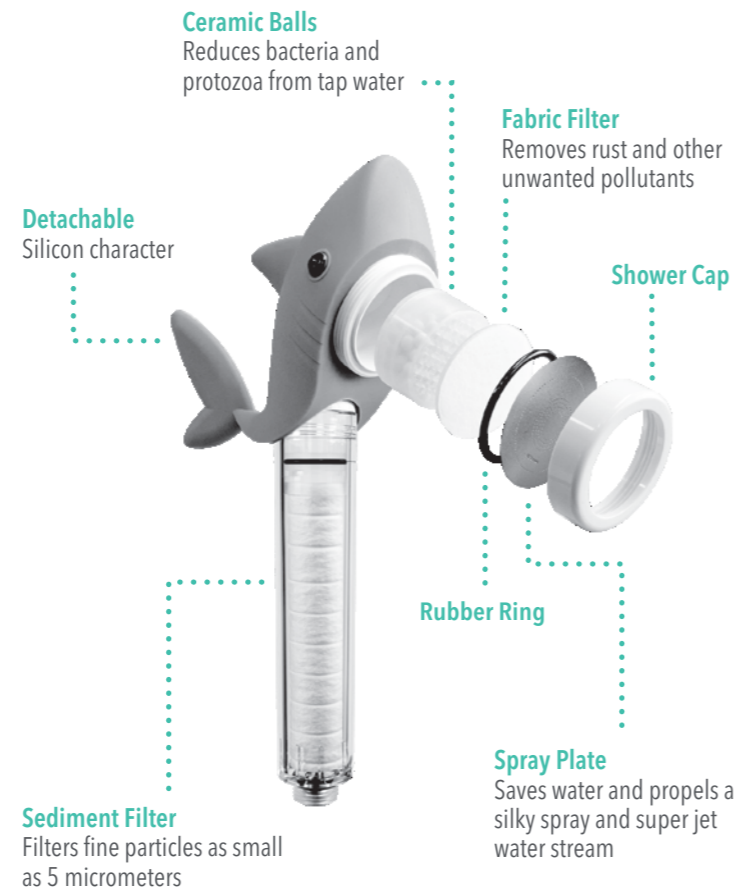


Product Line Up



Product Features



Caution

1. Use only tap water. The use of industrial water or heavy water may cause skin damage and/or dermatitis.
2. Check for leaks in the joint areas after installation. Insert a rubber gasket in the joint areas to prevent leaks.
3. Use only for showering and washing purposes.
4. Do not submerge the shower head in the bathtub or basin for prolonged periods of time.
5. Do not use excessive force when assembling the shower head.
6. Discontinue use if the shower head is broken.
7. Do not use benzene or paint thinner when cleaning the shower head.

Specifications

Product Name	Livo Kids Shower Head
Model No.	Shark (Livo1001 / Livo1002) Octopus (Livo2001 / Livo2002) Turtle (Livo3001)
Material	ABS, Stainless Steel, Silicon Rubber
Origin	Made in Korea
Operating Temperature	Maximum 140°F / Minimum 59°F
Distributor	Barumi®

Warranty

PRODUCT WARRANTY CARD

- We warrant our products to be free from manufacturing defects under normal use and service for a period of one (1) year from the date of purchase. This warranty is provided to the original purchase and cannot be transferred. If the product is used for business and/or commercial purposes, the warranty becomes void.
- If the product has a defect, please contact Barumi.

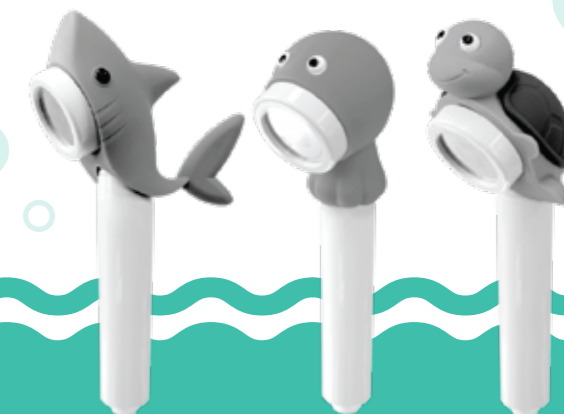
Product Name	Model Name	
Date of Purchase	Duration of Warranty	1 Year limited warranty
Name of Purchaser		

info@barumiusa.com • barumiusa.com

- This product is solely intended for households or household-like environments.
- Read all instructions and guidelines thoroughly before use.
- User should have access to this User Manual at all times during installation and operation.
- For product improvement, designs and specifications are subject to change without prior notice.

Barumi®

livo
KIDS SHOWER HEAD



USER MANUAL

TABLE OF CONTENTS

Features and Benefits	1	Product Line Up	6
How to Install the Shower Head	2	What's in the Box	7
When to Replace the Filters	3	Caution / Specifications	8
How to Replace the Filters	4	Warranty	9
How to Remove / Assemble Character	5		

info@barumiusa.com • barumiusa.com



Features and Benefits



Rust and Pollutants Removal

The sediment filter removes rust and fine particles from the tap water.



Saves Water

When compared to other standard shower heads, our spray plate saves up to 50% more water while increasing water pressure.



Negative Ions Shower

The patented, triangular water spray plate holes unleash 421,000 negative ions per 1 cc of water, so you can enjoy both a high-pressured and soft mist spray shower.



Silky Spray Shower

The tiny triangle holes on the spray plate takes water clusters and propels them into a silky spray for that super-soft feeling in the shower.



Super Jet Shower

The spray plate holes are sized 0.33 mm, allowing the water pressure to increase by at minimum, 1.5 times more than a standard shower head's water pressure



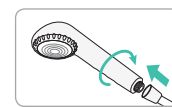
BPA Free

Our handheld shower head is made from BPA-free plastic, so you don't have to worry about dangerous and harmful toxins.

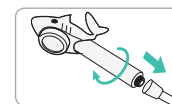
1

How to Install the Shower Head

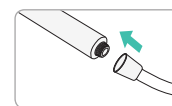
Replacing a handheld shower head



1. Separate the old handheld shower head from the hose by turning it counterclockwise.

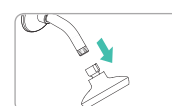


2. Connect the new handheld shower head on the hose by turning it clockwise and fastening until tight.

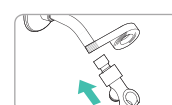


3. If a water leak is found between the shower head handle and the hose, ensure the rubber gasket is firmly in place in the hose connector.

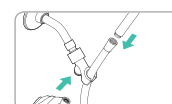
Replacing a fixed shower head



1. Disconnect the old shower head from the pipe by turning it counterclockwise. Remove any remaining sealant residue.



2. Reapply new sealant to the pipe and connect the new holder (not included) to it.



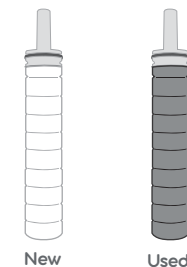
3. Connect the hose nut to the shower holder and the cone nut to the shower head handle.

2

When to Replace the Filters

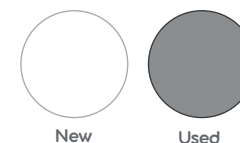
Sediment Filter

Depending on water quality and frequency of use, replace the filter every 1-2 months or when rust and pollutants are visible.



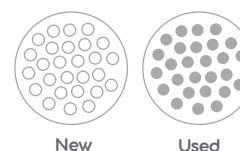
Fabric Filter

Depending on the water quality and frequency of use, replace the filter every 2-3 months.



Ceramic Balls

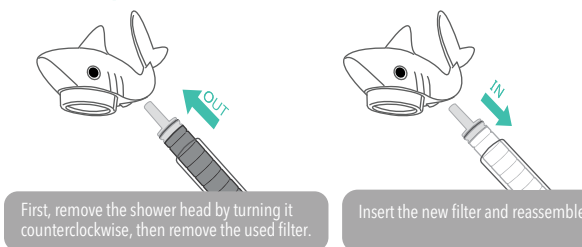
Depending on the water quality and frequency of use, replace the cartridge when the balls become dirty or discolored.



3

How to Replace the Filters

How to Replace the Sediment Filter



First, remove the shower head by turning it counterclockwise, then remove the used filter.

Insert the new filter and reassemble.

How to Replace the Fabric Filter

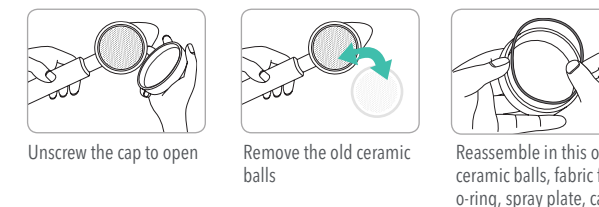


Unscrew the cap to open

Remove the old fabric filter

Insert the new fabric filter, the o-ring, then the plate. Finally, close the cap.

How to Replace the Ceramic Balls



Unscrew the cap to open

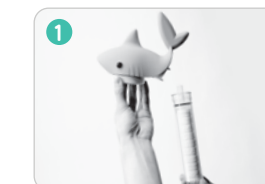
Remove the old ceramic balls

Reassemble in this order: ceramic balls, fabric filter, o-ring, spray plate, cap.

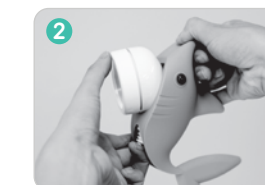
4

How to Remove / Assemble Character

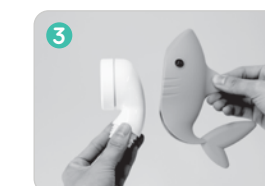
How to Remove the Character Head



Detach the character and shower head by unscrewing it from the handle.



Pull the character head backwards.

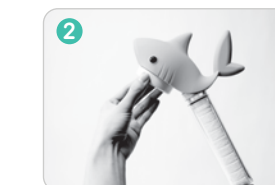


Disassemble the character head from the shower head.

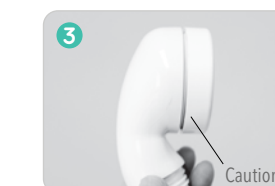
How to Assemble the Character Head



Place the character head over the shower head.



Ensure the character head opening fits properly over the shower head cap.



Do not overtighten the shower head cap. A space is required for the character head to fit in properly.

5